

Bid Item No.	Bid Item Description	Quantity	Units	Notes	Unit Disposal Cost	Disposal Cost Bid
1	Wood debris east of gate	0.5	cy	4 pallets and 4 posts		
2	Metal livestock gates	3	each	Possible scrap (approx. 100 lbs)		
3	Metal fence and pipe			Possible scrap (approx. 100 lbs)		
4	Wood debris	10	cy			
5	Blue trailer house with refridgerator and collapsed roof	1	each	10 ft wide x 50 ft long x 9 ft tall		
6	Green trailer house with refridgerator and air conditioner	1	each	8 ft wide x 50 ft long x 9 ft tall		
7	General waste	28	cy	Approximate visual quantity		
8	Scrap metal sheets			Possible scrap (approx. 100 lbs)		
9	Shed (mostly wood)	1	each	8 ft deep x 7 ft tall x 19 ft long		
10	Shed and 6 pallets (mostly wood)	1	each	7 ft deep x 6 ft tall x 10 ft long		
11	Small flatbed trailer	1	each	6.5 feet wide x 9 ft long (13 ft long with tongue)		
12	Yellow trailer house (main)	1	each	10 ft tall x 70 ft long x 14 ft wide		
13	Yellow trailer house (porch)	1	each	7 ft x 15 ft		
14	Yellow trailer house addition with air conditioner	1	each	9 ft wide x 35 ft long x 10 ft tall		
15	Tractor tire in river	1	each			
16	Dryer	2	each			
17	Little House	1	each	12.5 ft deep x 8.5 ft wide x 9 ft tall		
18	Heavy axle and springs	1	each	Possible scrap (>400 lbs)		
19	General waste	2	cy	Approx. visual quantity		
20	Metal machine forks	1	each	Possible scrap (approx. 300-400 lbs)		
21	CAT generator with fuel tank and fuse panel/control box	1	each	Possible scrap		
22	Wood debris and general waste along front of Plant	10	cy	Approx. visual quantity		
23	General waste in and around Maintenance Shop	80	cy	Approx. visual quantity		
24	Refrigerator	3	each			
25	Truck topper	2	each			
26	Truck bed camper	1	each			
27	Old engine (located in wood shack)	1	each	Possible scrap (approx. 3,000 lbs)		
28	General waste west of Maintenance Shop	20	cy	Approx. visual quantity		
29	Engine	1	each	Possible scrap (approx. 500 lbs)		
30	General waste west of Plant	40	cy	Approx. visual quantity		
31	Barn	1	each			
32	General waste in Barn	150	cy	Approx. visual quantity		
33	Steel bridge frame	1	each	Possible scrap (10 ft wide x 10 ft tall x 80 ft long)		
34	Steel tank	1	each	Possible scrap (4.5-ft diameter x 9 ft tall)		
35	Truck flatbed	1	each	8 ft x 14 ft		
36	Pop-up trailer camper	1	each	7 ft wide x 11 ft long		
37	Sofas	3	each			
38	Wood debris	20	cy	Approx. visual quantity		
39	Concrete with rebar	40	cy	Approx. visual quantity		
40	Hot tub	2	each			
41	Scrap steel (loose)	20	cy	Possible scrap (approx. visual quantity)		
42	Truck camper combination	1	each			
43	General waste pile	120	cy	Approx. visual quantity		
44	Scrap steel			Possible scrap (approx. 500 lbs)		
45	General waste	40	cy	Approx. visual quantity		
46	Fiberglass boat	1	each			
47	General waste along front of fence	30	cy	Approx. visual quantity		
Throughout	Tires without Rims	545	Each	Quantity not exact, scattered throughout site		
Throughout	Tires with Rims	301	Each	Quantity not exact, scattered throughout site		
					TOTAL	

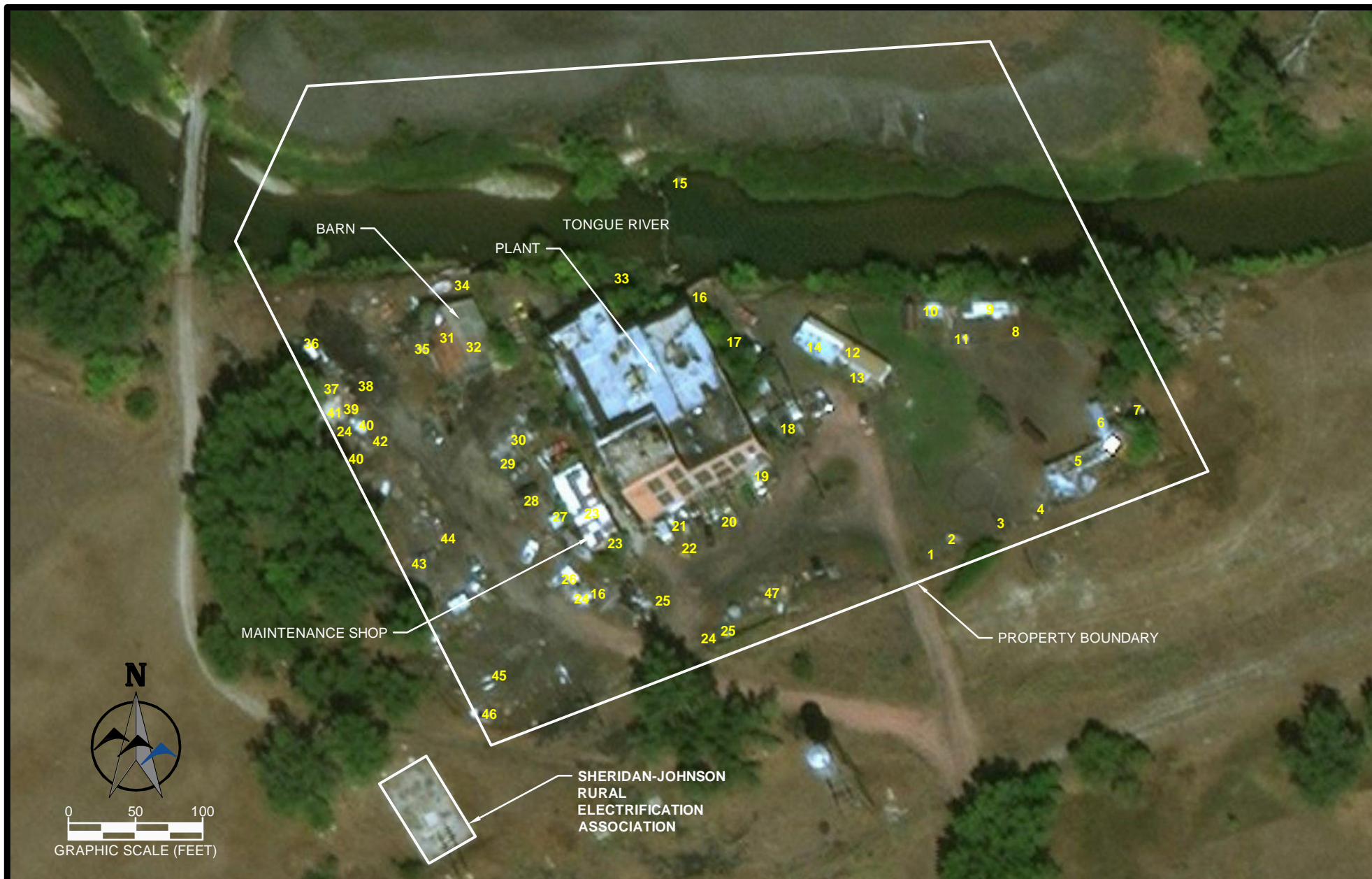


FIGURE 1. DEBRIS LOCATIONS



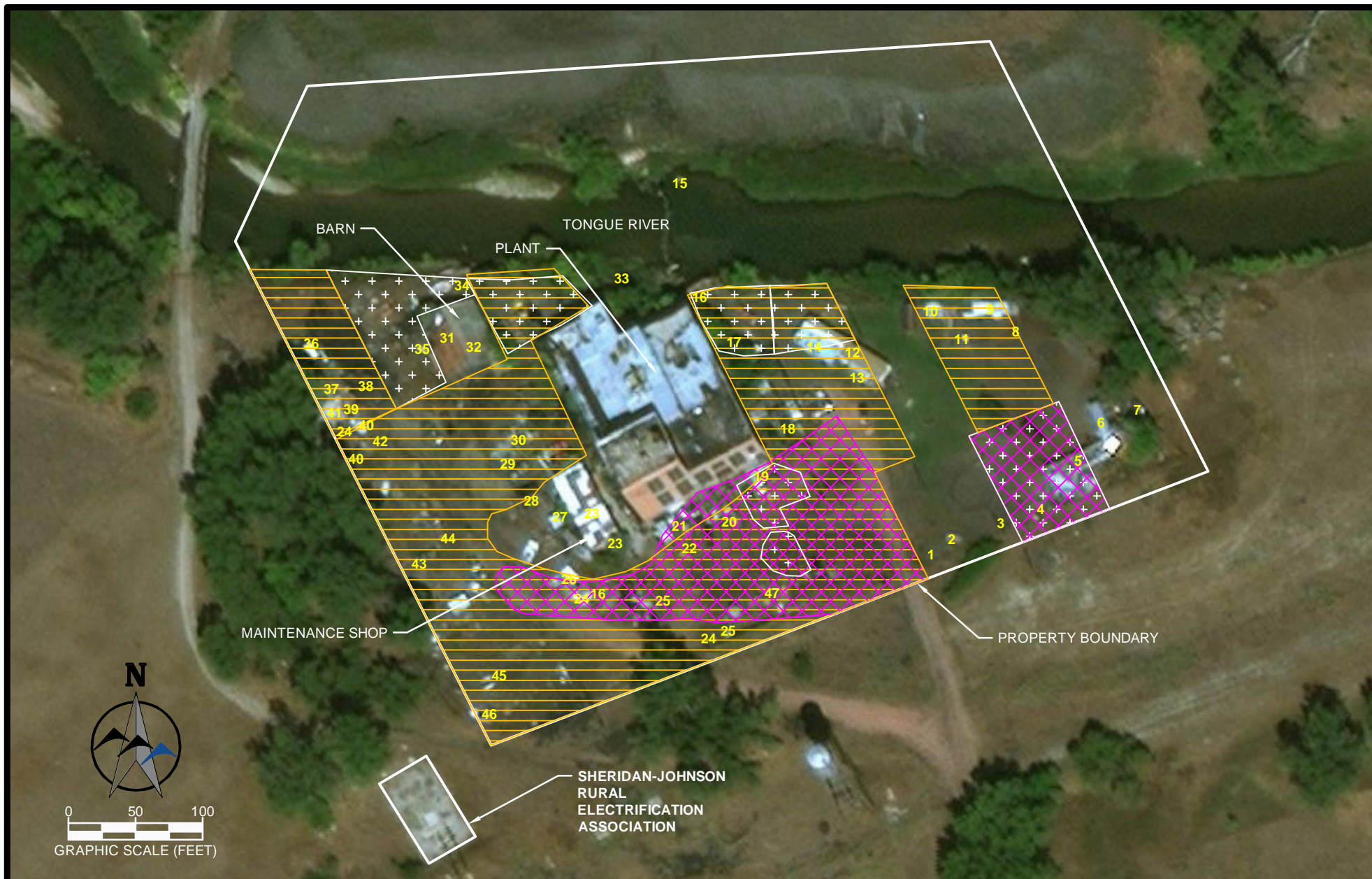


FIGURE 2. DEBRIS LOCATIONS IN RELATION TO SOIL CONTAMINATION

#### LEGEND

- 38 DEBRIS LOCATION IDENTIFICATION
- [Yellow Hatching] SOIL CONTAMINATION (LEAD)
- [White Crosses] SOIL CONTAMINATION (ARSENIC)
- [Pink Cross-Hatching] SOIL CONTAMINATION (PCB)

DESIGNED BY:  **WWCENGINEERING**





<b>Bid Item No.</b>	1
<b>Bid Item Description</b>	Wood debris east of gate (4 pallets, 4 posts)
<b>Quantity</b>	0.5 cy



<b>Bid Item No.</b>	2 (located behind pallets)
<b>Bid Item Description</b>	Metal livestock gates
<b>Quantity</b>	3 Possible scrap (approx. 100 lbs)



# NO PHOTO

<b>Bid Item No.</b>	3
<b>Bid Item Description</b>	Metal fence and pipe
<b>Quantity</b>	Possible scrap (approx. 100 lbs)



<b>Bid Item No.</b>	4
<b>Bid Item Description</b>	Wood debris
<b>Quantity</b>	10 cy (approx. 24 ft by 12 ft triangle and average 2 ft high)





<b>Bid Item No.</b>	5
<b>Bid Item Description</b>	Blue trailer house with refrigerator and collapsed roof
<b>Quantity</b>	1 each (10 ft wide x 50 ft long x 9 ft tall)



<b>Bid Item No.</b>	6
<b>Bid Item Description</b>	Green trailer house with refrigerator and air conditioner
<b>Quantity</b>	1 each (8 ft wide x 50 ft long x 9 ft tall)





<b>Bid Item No.</b>	7
<b>Bid Item Description</b>	General waste
<b>Quantity</b>	28 cy (approx. 25 ft by 10 ft and average 3 ft high)



<b>Bid Item No.</b>	8
<b>Bid Item Description</b>	Scrap metal sheets
<b>Quantity</b>	(approx. 100 lbs)





<b>Bid Item No.</b>	9
<b>Bid Item Description</b>	Shed (mostly wood)
<b>Quantity</b>	1 each (8 ft deep x 7 ft tall x 19 ft long)



<b>Bid Item No.</b>	10
<b>Bid Item Description</b>	Shed and 6 pallets (mostly wood)
<b>Quantity</b>	1 each (7 ft deep x 6 ft tall x 10 ft long)





<b>Bid Item No.</b>	11
<b>Bid Item Description</b>	Small flatbed trailer
<b>Quantity</b>	1 each (6.5 ft wide x 9 ft long and 13 ft long total with tongue)



<b>Bid Item No.</b>	12
<b>Bid Item Description</b>	Yellow trailer house (main)
<b>Quantity</b>	1 each (10 ft tall x 70 ft long x 14 ft wide)





<b>Bid Item No.</b>	13
<b>Bid Item Description</b>	Yellow trailer house (porch)
<b>Quantity</b>	1 each (7 ft x 15 ft)



<b>Bid Item No.</b>	14
<b>Bid Item Description</b>	Yellow trailer house addition with air conditioner (right)
<b>Quantity</b>	1 each (9 ft wide x 35 ft long x 10 ft tall)





<b>Bid Item No.</b>	15
<b>Bid Item Description</b>	Tractor tire in river
<b>Quantity</b>	1 each



<b>Bid Item No.</b>	16
<b>Bid Item Description</b>	Dryer
<b>Quantity</b>	1 of 2





<b>Bid Item No.</b>	17
<b>Bid Item Description</b>	Little House
<b>Quantity</b>	1 each (12.5 ft deep x 8.5 ft wide x 9 ft tall)



<b>Bid Item No.</b>	18
<b>Bid Item Description</b>	Heavy axle and springs
<b>Quantity</b>	1 each (possible scrap >400 lbs)





<b>Bid Item No.</b>	19
<b>Bid Item Description</b>	General waste
<b>Quantity</b>	2 cy (approx. visual quantity)



<b>Bid Item No.</b>	20
<b>Bid Item Description</b>	Metal machine forks
<b>Quantity</b>	1 each (possible scrap 300-400 lbs)





<b>Bid Item No.</b>	21
<b>Bid Item Description</b>	CAT generator with fuel tank and fuse panel/control box
<b>Quantity</b>	1 each (possible scrap)



<b>Bid Item No.</b>	22
<b>Bid Item Description</b>	Wood debris and general waste along front of Plant
<b>Quantity</b>	10 cy (approx. visual quantity)





<b>Bid Item No.</b>	23 and 25
<b>Bid Item Description</b>	General waste in and around Maintenance Shop and truck topper
<b>Quantity</b>	80 cy (approx. visual quantity)



<b>Bid Item No.</b>	16 and 24
<b>Bid Item Description</b>	Dryer and Refrigerator
<b>Quantity</b>	1 dryer of 2 and 1 refrigerator of 3





<b>Bid Item No.</b>	24
<b>Bid Item Description</b>	Refrigerator
<b>Quantity</b>	1 of 3



<b>Bid Item No.</b>	25
<b>Bid Item Description</b>	Truck topper
<b>Quantity</b>	2 each





<b>Bid Item No.</b>	26
<b>Bid Item Description</b>	Truck bed camper
<b>Quantity</b>	1 each



<b>Bid Item No.</b>	27
<b>Bid Item Description</b>	Old engine (located in wood shack)
<b>Quantity</b>	1 each (possible scrap approx. 3,000 lbs)





<b>Bid Item No.</b>	28
<b>Bid Item Description</b>	General waste west of Maintenance Shop
<b>Quantity</b>	20 cy (approx. visual quantity)



<b>Bid Item No.</b>	29
<b>Bid Item Description</b>	Engine
<b>Quantity</b>	1 each (possible scrap approx. 500 lbs)



# NO PHOTO

<b>Bid Item No.</b>	30
<b>Bid Item Description</b>	General waste west of Plant
<b>Quantity</b>	40 cy (approx. visual quantity)



<b>Bid Item No.</b>	31
<b>Bid Item Description</b>	Barn
<b>Quantity</b>	1 each (45 ft x 45 ft x approx. 20 ft tall w/ timber and steel frame)





Bid Item No.	31
Bid Item Description	Barn interior
Quantity	1 each (timber and steel frame)



Bid Item No.	31
Bid Item Description	Barn interior
Quantity	1 each (timber and steel frame)





<b>Bid Item No.</b>	32
<b>Bid Item Description</b>	General waste in Barn
<b>Quantity</b>	150 cy (approx. visual quantity)



<b>Bid Item No.</b>	32
<b>Bid Item Description</b>	General waste in Barn
<b>Quantity</b>	150 cy (approx. visual quantity)





<b>Bid Item No.</b>	33
<b>Bid Item Description</b>	Steel bridge frame
<b>Quantity</b>	1 each (possible scrap 10 ft wide x 10 ft tall x 80 ft long)



<b>Bid Item No.</b>	33
<b>Bid Item Description</b>	Steel bridge frame
<b>Quantity</b>	1 each (possible scrap 10 ft wide x 10 ft tall x 80 ft long)





<b>Bid Item No.</b>	33
<b>Bid Item Description</b>	Steel bridge frame
<b>Quantity</b>	1 each (possible scrap 10 ft wide x 10 ft tall x 80 ft long)



<b>Bid Item No.</b>	34
<b>Bid Item Description</b>	Steel tank
<b>Quantity</b>	1 each (possible scrap 4.5-ft diameter x 9 ft tall)





<b>Bid Item No.</b>	35
<b>Bid Item Description</b>	Truck flatbed
<b>Quantity</b>	1 each (8 ft x 14 ft)



<b>Bid Item No.</b>	36
<b>Bid Item Description</b>	Pop-up trailer camper
<b>Quantity</b>	1 each (7 ft wide x 11 ft long)





<b>Bid Item No.</b>	37
<b>Bid Item Description</b>	Sofas
<b>Quantity</b>	3 each



<b>Bid Item No.</b>	38
<b>Bid Item Description</b>	Wood debris
<b>Quantity</b>	20 cy (approx. visual quantity)





<b>Bid Item No.</b>	39
<b>Bid Item Description</b>	Concrete with rebar
<b>Quantity</b>	40 cy (approx. visual quantity)



<b>Bid Item No.</b>	40
<b>Bid Item Description</b>	Hot tub
<b>Quantity</b>	1 of 2





<b>Bid Item No.</b>	40
<b>Bid Item Description</b>	Hot tub
<b>Quantity</b>	2 of 2



<b>Bid Item No.</b>	41
<b>Bid Item Description</b>	Scrap steel (loose)
<b>Quantity</b>	20 cy (approx. visual quantity)





<b>Bid Item No.</b>	42
<b>Bid Item Description</b>	Truck camper combination
<b>Quantity</b>	1 each



<b>Bid Item No.</b>	43
<b>Bid Item Description</b>	General waste pile
<b>Quantity</b>	120 cy (approx. visual quantity)





<b>Bid Item No.</b>	43
<b>Bid Item Description</b>	General waste pile
<b>Quantity</b>	120 cy (approx. visual quantity)



<b>Bid Item No.</b>	44
<b>Bid Item Description</b>	Scrap steel
<b>Quantity</b>	Possible scrap (approx. 500 lbs)





<b>Bid Item No.</b>	45
<b>Bid Item Description</b>	General waste
<b>Quantity</b>	40 cy

# NO PHOTO

<b>Bid Item No.</b>	46
<b>Bid Item Description</b>	Fiberglass boat
<b>Quantity</b>	1 each



# NO PHOTO

<b>Bid Item No.</b>	47
<b>Bid Item Description</b>	General waste along front of fence
<b>Quantity</b>	30 cy